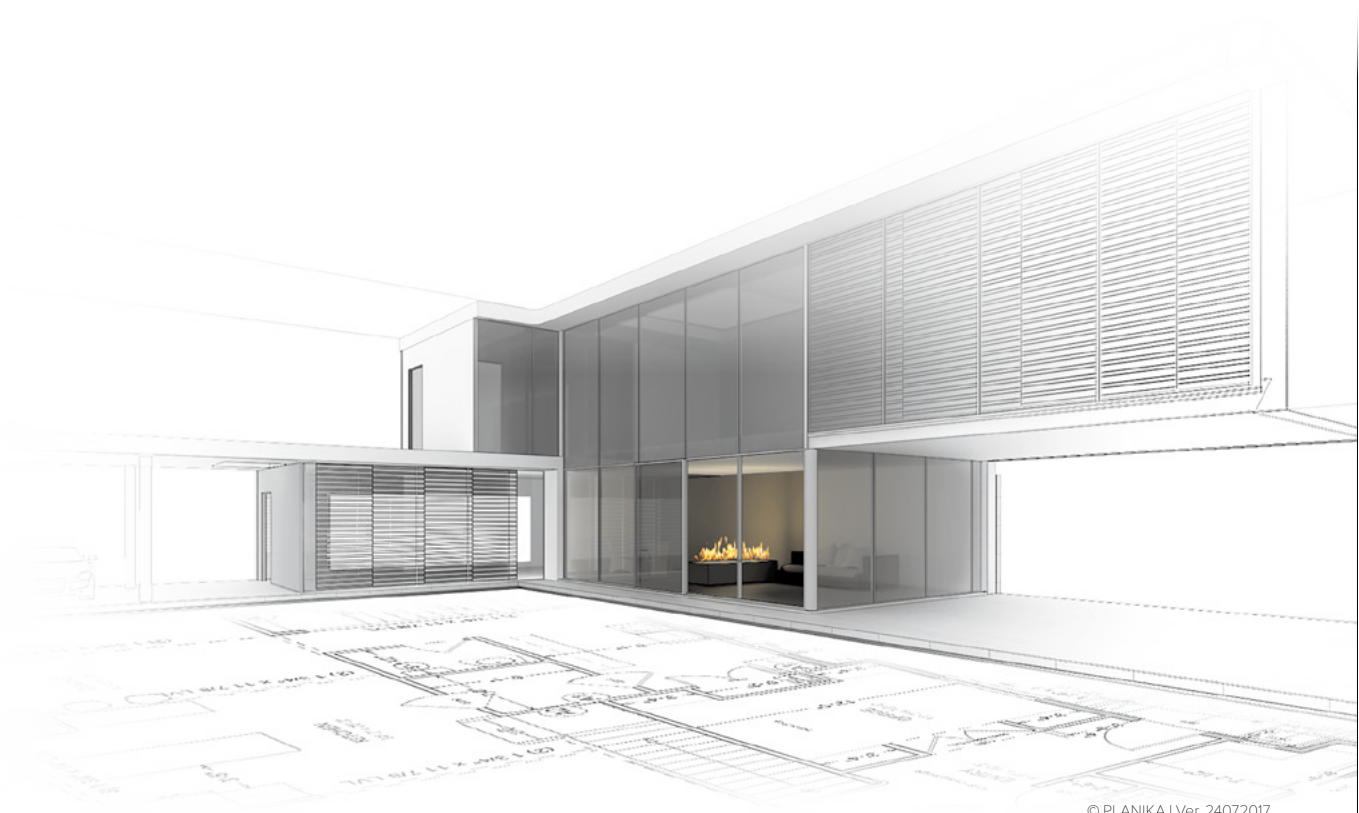


# PushButtonFireplaces

intelligent fire



© PLANIKA | Ver. 24072017

# PrimeFire Logs

# PushButton Fireplaces

## PrimeFire Logs

*Automatic features for comfort and safety*  
*Decorative accessories for natural flames*

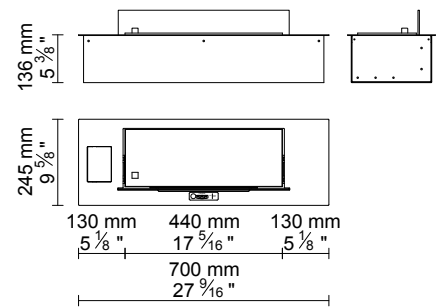


### FEATURES:

- Natural flames with decorative logs and vermiculite
- BEV\* Technology
- No smell / no ash / no smoke
- Optional remote control
- Advanced safety sensors
- Automatic shutdown in case of errors
- Child Lock
- Advanced microprocessor
- Diode display
- Intuitive control
- 2 levels of flame height
- Easy installation
- No additional installation
- No additional ventilation required
- No chimney required
- For indoor use
- Eco-friendly
- Advanced microprocessor
- Automatic refueling system



### DIMENSIONS:

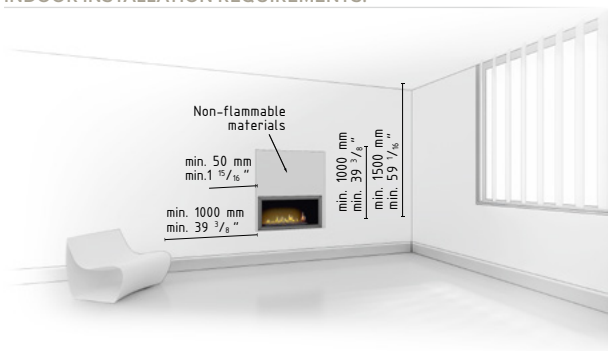


\* BEV Technology – A patented process resulting in the clean burning of bio-ethanol fuel vapours.

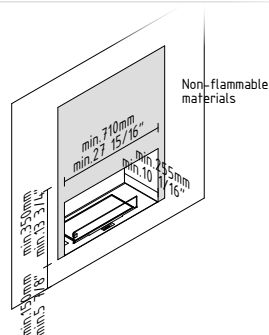
### TECHNICAL DATA:

**Capacity:** 2,5 L / [US] 0,65 gal / [UK] 0,55 gal  
**Burning time:** 4,5-7h  
**Heat output:** 2-3,1 kw / 6690 - 10512 BTU/h  
**Net weight:** 15 kg / 33 lbs  
**Air circulation:** min. 1/h  
**Minimum room size:**  
 please contact our Project Department for details  
**Power supply:** 230 V / 115 V  
**Finish:**  
 TOP: black powder coated steel

### INDOOR INSTALLATION REQUIREMENTS:



### INSTALLATION:



www.PLANIKAFIRES.com

download PRODUCT INSTRUCTION

