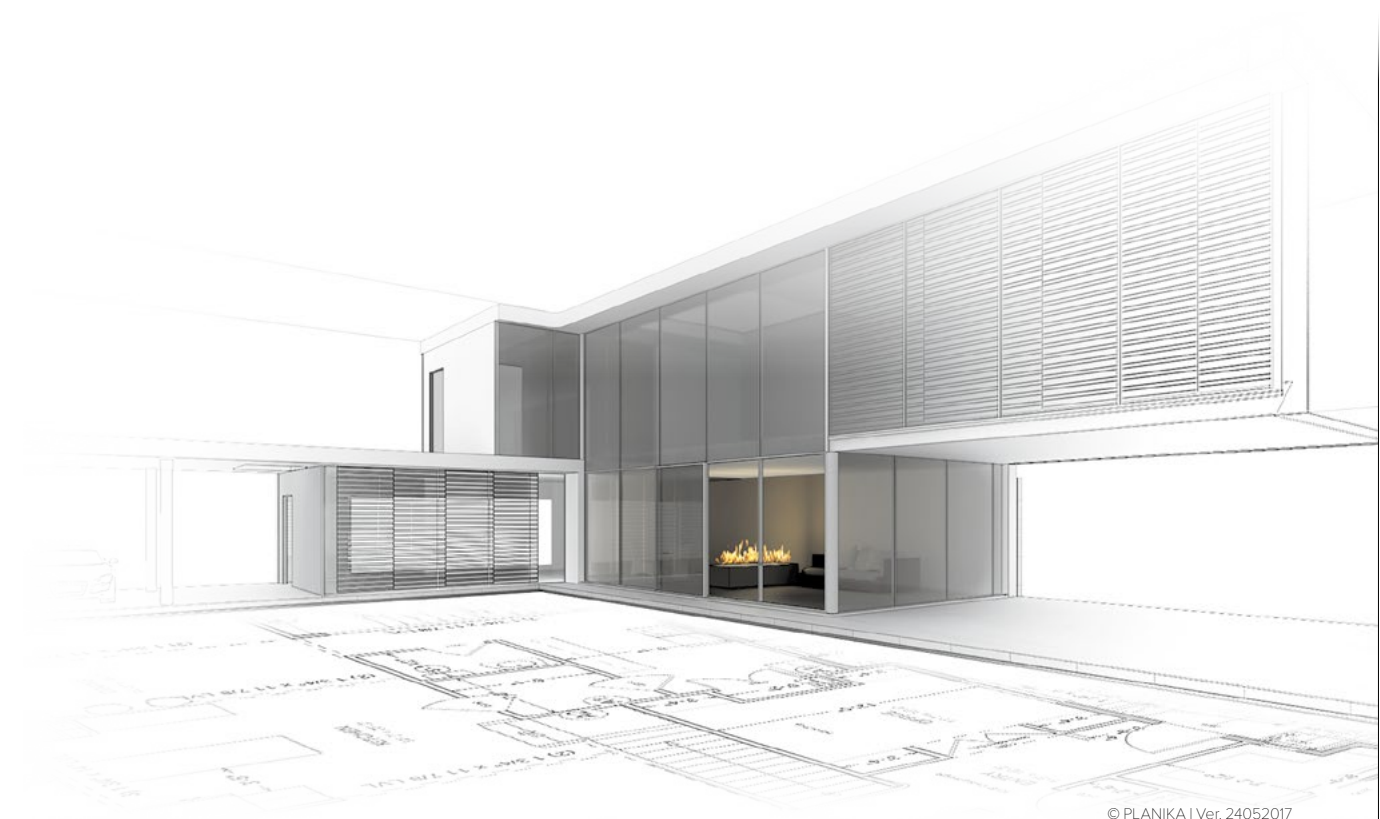


PushButtonFireplaces

intelligent fire



© PLANIKA | Ver. 24052017

Lincoln PushButton Fireplaces

Lincoln

Lincoln

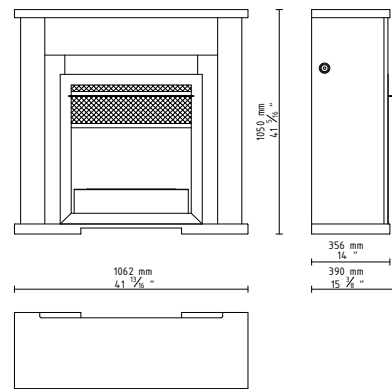
*The First bioethanol Fireplace for every apartment
Modern solution in a traditional form*

FEATURES:

- BEV* Technology
- Floor standing
- No smell / no ash / no smoke
- Remote controllable
- Advanced safety sensors
- Automatic shutdown in case of errors
- Child lock
- Advanced microprocessor
- Diode display
- Control panel
- Intuitive control
- 2 levels of flame height
- Bigger external fuel tank
- Easy installation
- No additional installation
- No additional ventilation required
- No flue system required
- Plug & play fireplace
- Ceramic glass
- Decorative ceramic logs and pebbles
- Integrated automatic fuel pump
- For indoor use
- Eco-friendly



DIMENSIONS:



* BEV Technology – A patented process resulting in the clean burning of bio-ethanol fuel vapours.

TECHNICAL DATA:

Capacity: 10 L / [US] 2,64 gal / [UK] 2,2 gal

Burning time: 17-22 h

Heat output: 2,5-3,1 kw / 8600 - 10512 BTU/h

Net weight: 75 kg / 165 lbs

Air circulation: min. 1/h

Minimum room size:

please contact our Project Department for details

Power supply: 230 V / 115 V

Finish:

Fireplace building finish: MDF lacquered polyurethane RAL 9003,

Steel elements finish: stenotherm lacquer-UHT 600 mat similar to RAL 7015

INDOOR INSTALLATION REQUIREMENTS:



download **PRODUCT INSTRUCTION**